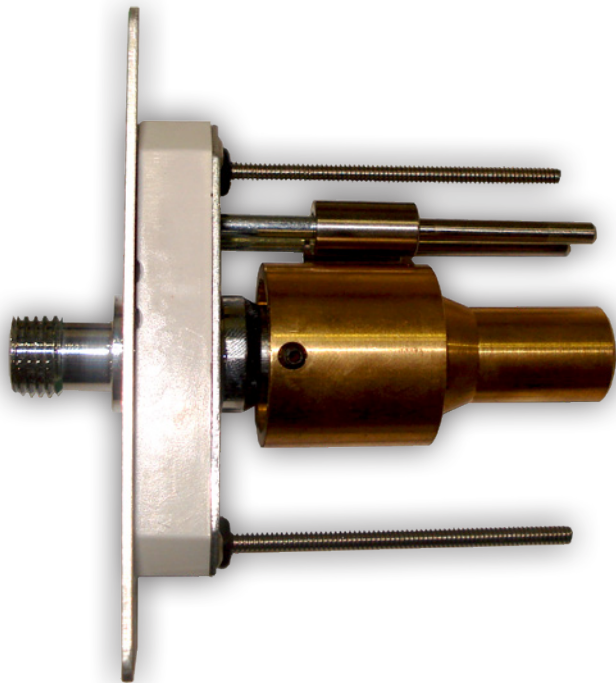


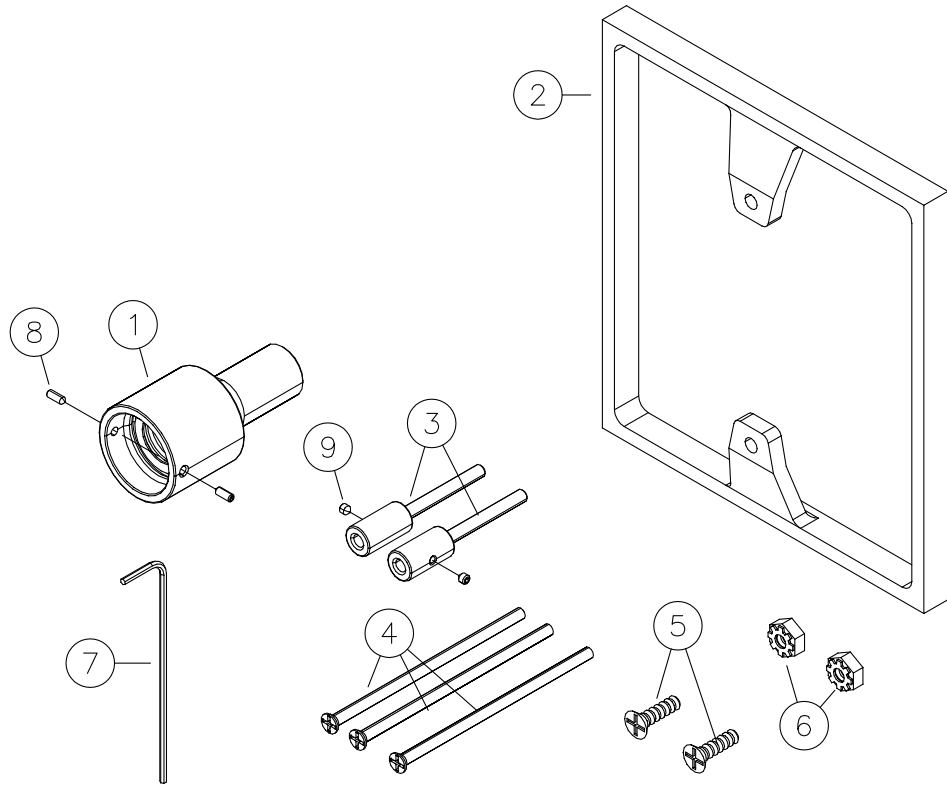
Installation Instructions

Latch Valve Extension Kit



The Latch Valve Extension Kit allows you to alter a Latch Valve Assembly to accommodate a 1-1/4" to 2" wall thickness.

Latch Valve Extension Kits shall be cleaned and degreased for medical gas services, factory assembled and tested.



Kit Contents

Model Number: O-FASC-EXT-KIT		
Item	Quantity	Description
1	1	Extended Adaptor with Seal
2	1	3/8" [9.525 mm] Stand-Off Filler Frame
3	2	Indexing Pin Extensions
4	3	#6-32 x 3", Phillips Flat Head Screw
5	2	#6-32 x 7/16", Phillips Flat Head Screw
6	2	#6-32 Keps Nut
7	1	1/16" Hex Allen Key Wrenc
8	2	#6-32 x 3/8" Set Screw (already install in, extension assembly)
9	2	#6-32" x 1/8" Set Screw (already install in, indexing pin assembly)

Required Tools:

- Tape Measure
- Phillips Type Screw Driver

Step 1: Preparation

*Measure wall depth from outlet rough-in to finished wall surface (Figure 1)

* If wall depth is between 1-1/4" [31.75mm] and 1-3/4" [44.45mm], the 3/8" [9.525mm] filler frame will be required for proper installation.

* If wall depth is over 1-3/4" [44.45mm] discard the 3/8" [9.525mm] filler frame.

Assemble 3/8" Filler Frame and Trim Plate.

*Using the two #6-32 x 7/16" screws and the two #6-32 Keps nuts provided, assemble the trim plate onto the Filler Frame. (Figure 2, 3 & 4)

Figure 1



Figure 2

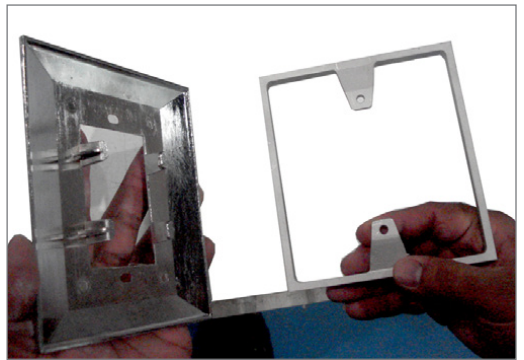
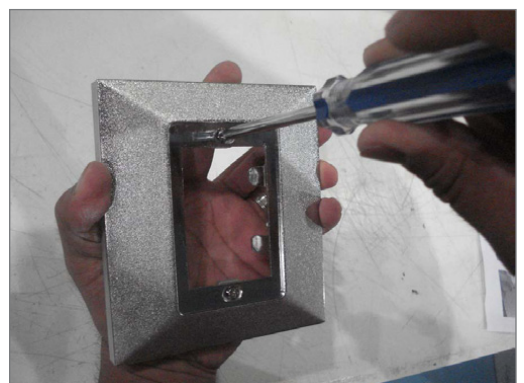


Figure 3



Figure 4



Step 2: Assemble Extension Adapter to Latch Valve

*Install and push the Extension Adapter fully, onto the barrel of the Front Latch Assembly (Figure 5).

*Tighten the two set screws with the provided 1/16" Hex Allen Key (Figure 6).

Step 3: Assemble Indexing Pin Extension to Latch Valve

*Slide indexing pin extensions fully onto latch valve indexing pins (Figure 7)

*Tighten set screws with provided 1/16" Hex Allen Key *(Figure 8)

Note: Indexing pin extensions must not protrude more than 1/4" beyond the end of the Extension Adapter.

Figure 5

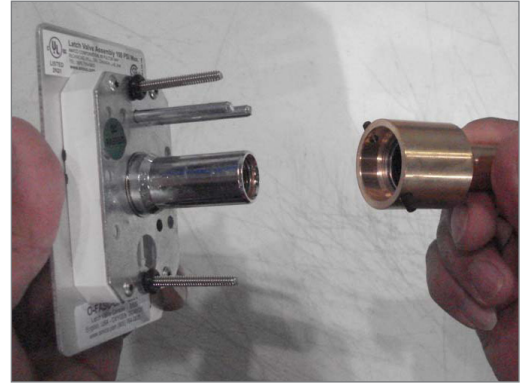


Figure 6



Figure 7



Figure 8



Step 4: Mounting Screws

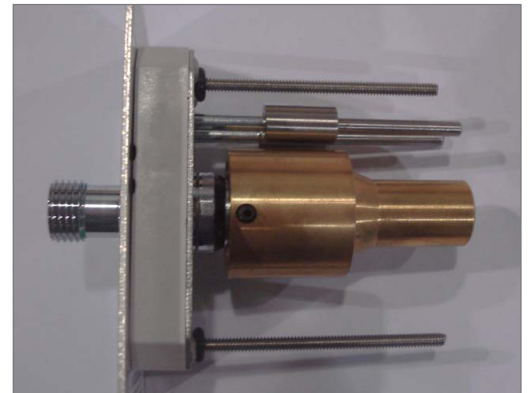
*Replace existing Latch Valve screws with #6-32 x 3" screws provided in the kit. (Figure 9)

Figure 9



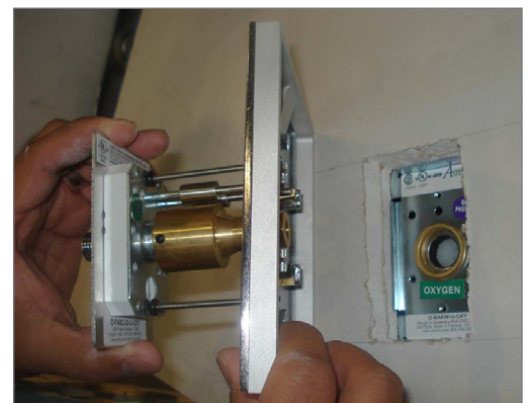
* Completed Latch Valve Assembly should appear as shown (Figure 10)

Figure 10

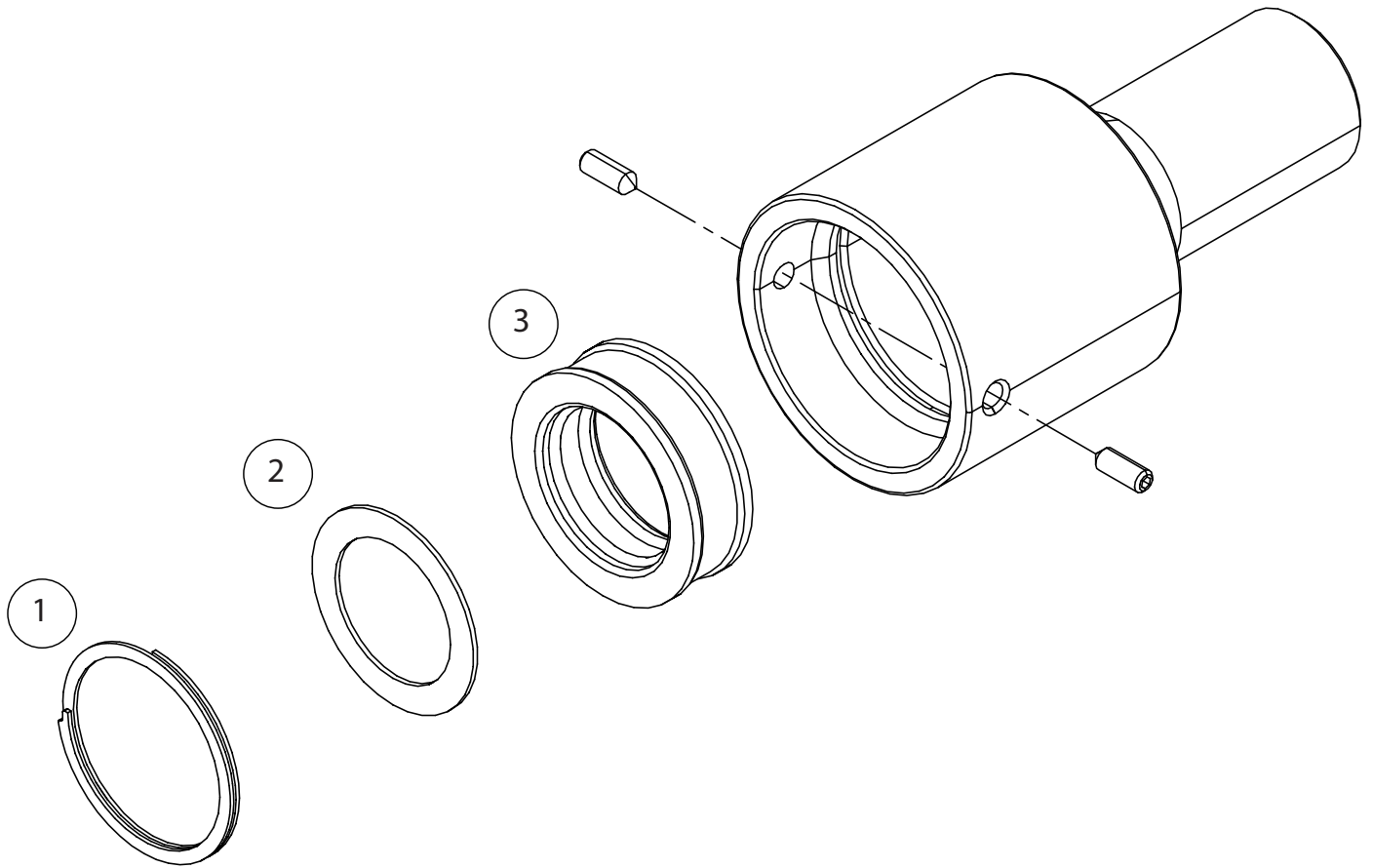


Step 5: Install completed Extended Latch Valve Assembly with complete Trim Plate Assembly to the rough-in. (Figure 11)

Figure 11



Extension Valve Adapter Repair Components



Model Number: O-RK-BAK-EXT		
Item	Part Number	Description
1	O-X-BAK-RETAI	Retaining Ring
2	H-WASH-895-SS	Washer
3	O-X-BAK-SEAT	Seat/Seal

Notes

www.amico.com

Amico Pipeline | www.amico.com

85 Fulton Way, Richmond Hill
Ontario, L4B 2N4, Canada

71 East Industry Court, Deer Park
NY 11729, U.S.A

Toll Free Tel: 1.877.264.2697

Toll Free Fax: 1.866.440.4986

Tel: 905.763.7778

Fax: 905.763.8587

Email: info@amico.com