

Pressure Switch with Gauge for Pressure



Features:

- Removable copper diaphragm capsule
- Instrument quality snap-action switch
- Normally open or normally closed contacts
- Nema 4 water-tight housing with mounting brackets
- Pressure switches for normal 50 psig systems
- Pressure gauge with 2" dial
- DISS gas specific nut, nipple and demand check

General Specifications:

Pressure Gauge Assembly for the medical gas alarm system shall incorporate a U.L. Listed single pole double throw snap-action micro switch. The pressure switch shall be prewired with six color coded leads. Normally open or normally closed circuitry shall be field-selected to be compatible with the medical gas alarm system design. Electrical rating shall be 10 amperes at 120 volt AC.

The pressure switch shall be tested at 160 psi with an adjustable range of .5 to 80 psi and have external calibration dials with tamper-proof cover. Factory settings shall be 40 psi and 60 psi for pressure gases.

The switch enclosure shall be a Nema 4 water tight housing with mounting bracket, 1/4" FNPT bottom inlet gas service line connection, and 3/4" FNPT top inlet conduit.

A gauge shall be incorporated after the pressure switch. A gas specific DISS nut and nipple shall be attached to the bottom of the gauge.

The Pressure Gauge Assembly will then be mounted directly to a gas specific DISS demand check (provided by Amico) directly onto the pipeline. The demand check shall have a 1/4" Male NPT connection.

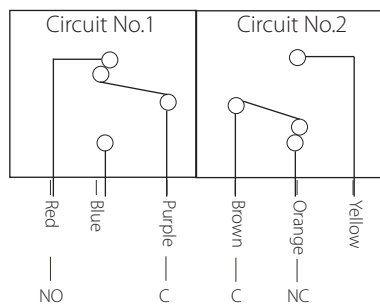
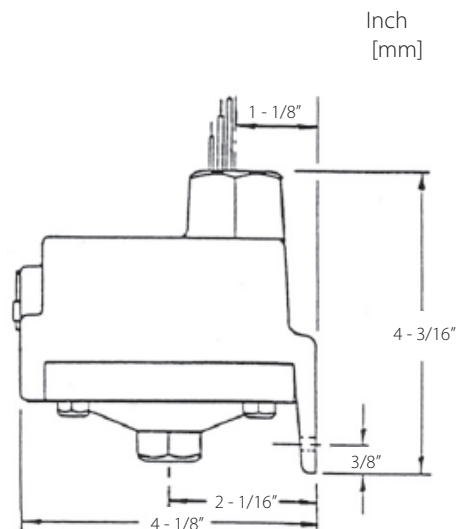
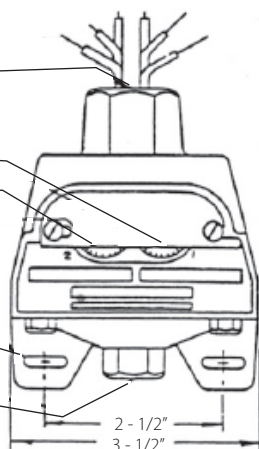
Technical Specifications

Switch Adjustment

Pressure

Turn self locking adjustment screw counter - clockwise to increase pressure setting (all dials calibrated for increasing settings).

- Six Leads
- 18" Long (Approx.)
- 3/4" NPT Conduit Connection
- Circuit No. 1 Calibrated Dial
- Circuit No. 2 Calibrated Dial
- 9/32" x 5/8" Mounting Hole (Typ.)
- 1/4" NPT Gas Service Connection



Wire Coding

Wiring Coding Pressure

Switch Circuit #1 Low
 Common - Purple
 Normally Closed - Blue
 Normally Open - Red

Circuit #2 High
 Common - Brown
 Normally Closed - Orange
 Normally Open - Yellow

Model Numbers

P-PRSW-GA-OXY = Pressure Gauge Assembly - Oxygen

P-PRSW-GA-AIR = Pressure Gauge Assembly - Medical Air

P-PRSW-GA-N2O = Pressure Gauge Assembly - Nitrous Oxide

P-PRSW-GA-CO2 = Pressure Gauge Assembly - Carbon Dioxide

(Available for gases that have a range of 50 psi service)

Pressure Switch with Gauge for Vacuum or WAGD



Features:

- Removable copper diaphragm capsule
- Instrument quality snap-action switch
- Normally open or normally closed contacts
- Nema 4 water-tight housing with mounting brackets
- Vacuum switches for normal 12" Hg systems
- Vacuum gauge with 2" dial
- DISS gas specific nut, nipple and demand check

General Specifications:

Pressure Switch with Gauge Assembly for the medical gas alarm system shall incorporate a U.L. Listed single pole double throw snap-action micro switch. The pressure switch shall be prewired with three color coded leads. Normally open or normally closed circuitry shall be field-selected to be compatible with the medical gas alarm system design. Electrical rating shall be 10 amperes at 120 volt AC.

The vacuum switch shall be tested up to 30" Hg with an adjustable range of .8" to 29" Hg, preset at 12" Hg for the alarm condition.

The switch enclosure shall be a Nema 4 water tight housing with mounting bracket, 1/4" FNPT bottom inlet gas service line connection, and 3/4" FNPT top inlet conduit.

A gauge shall be incorporated after the pressure switch. A gas specific DISS nut and nipple shall be attached to the bottom of the gauge.

The Pressure Switch with Gauge Assembly will then be mounted directly to a gas specific DISS demand check (provided by Amico) directly onto the pipeline. The demand check shall have a 1/4" Male NPT connection.

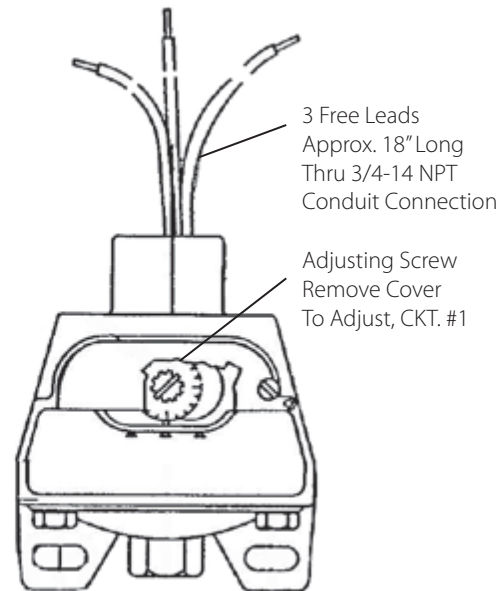
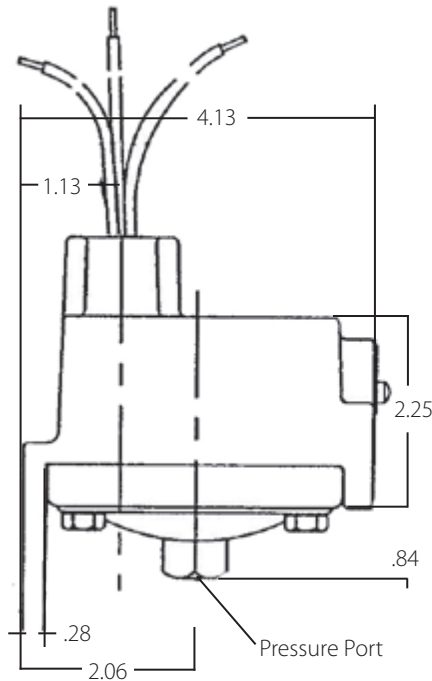
Technical Specifications

Switch Adjustment

Vacuum

Turn adjustment screw counter-clockwise to approach atmospheric pressure.

Inch
[mm]



Wire Coding

Wiring Coding Vacuum

Ground - Green

Common - Purple

Normally Closed -Red

Normally Open -Blue

Model Numbers

P-PRSW-GA-VAC = Vacuum Gauge Assembly

P-PRSW-GA-WAGD = WAGD Gauge Assembly

Pressure Switch With Gauge

For Nitrogen / Air and Oxygen Reserve



Features:

- Nitrogen / air and oxygen reserve systems
- Instrument quality snap-action switch
- Normally open or normally closed contacts
- Nema 4 water-tight housing
- 10-250 psi (adjustable range)
- Factory cleaned and sealed for oxygen service

General Specifications:

Pressure switch with gauge assembly for the medical gas alarm system shall incorporate a U.L. Listed single pole doublethrow snap-action switching element. Electrical connections are made through a 1/2" conduit connection to screw terminals on the switch. The switch may be wired normally open or normally closed. Electrical rating shall be 10 Ampere 120 volt AC.

The pressure switch has a proof pressure of 1000 psi with an adjustable range of 10 to 230 psi decreasing pressure or 11 to 250 psi increasing pressure. Only for nitrogen provide one switch for the high pressure alarm and one for the low pressure alarm signal.

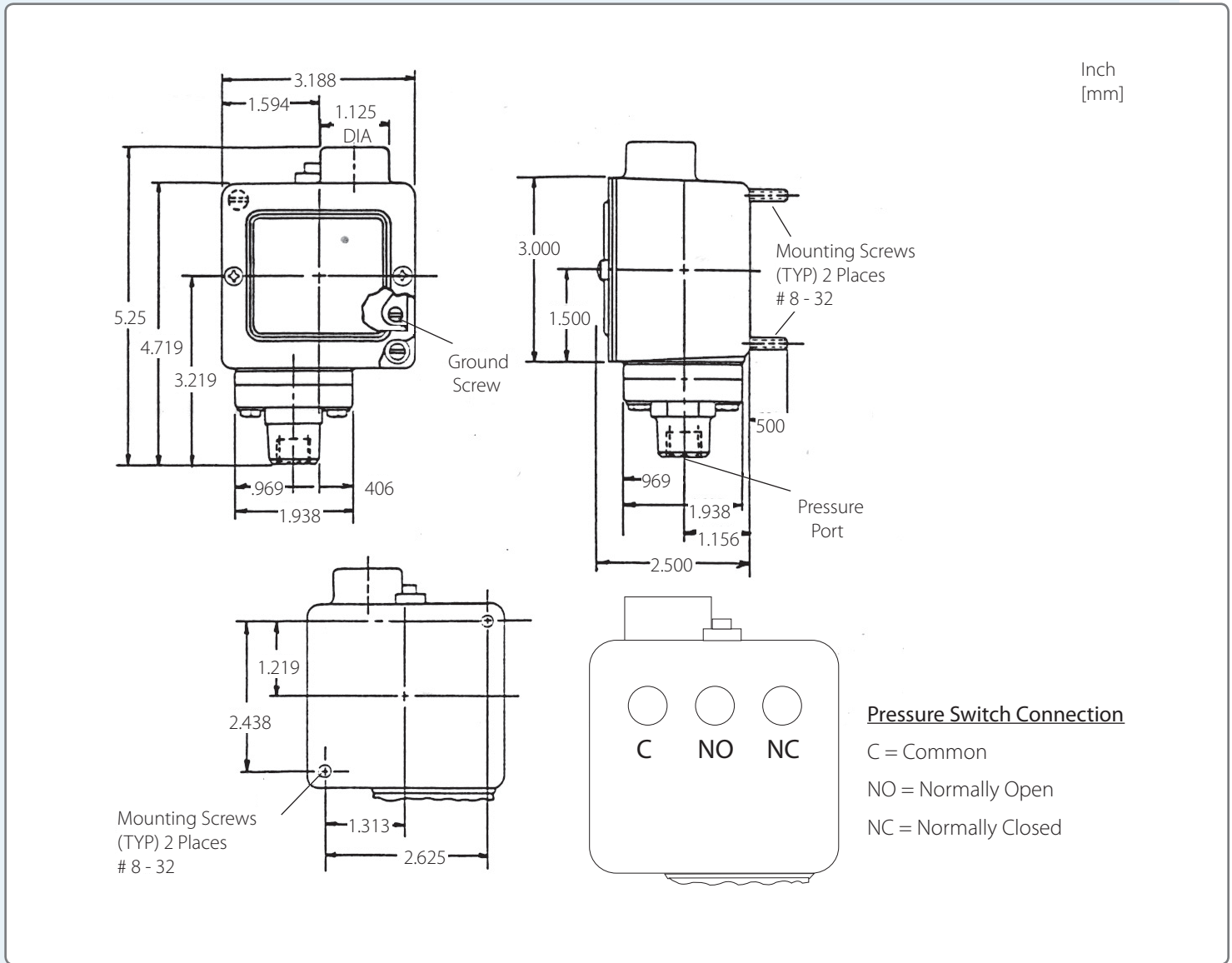
The enclosure is a Nema 4 water tight housing with a 1/4" NPT gas service line connection and a 1/2" NPT conduit hub .

A gauge is incorporated with a gas specific DISS nut and nipple that is attached to a 1/8" tee that houses the gauge.

The Pressure Gauge Assembly will then be mounted directly to a gas specific DISS demand check (provided by Amico) directly onto the pipeline. The demand check shall have a 1/4" Male NPT connection.

The Pressure Switch is UL Listed and CSA Approved.

Technical Specifications



Model Numbers

P-PRSW-GA-NIT = Pressure Switch with gauge assembly for use with Nitrogen / NIT RES

P-PRSW-GA-ARES = Pressure Switch with gauge assembly and AIR DISS kit

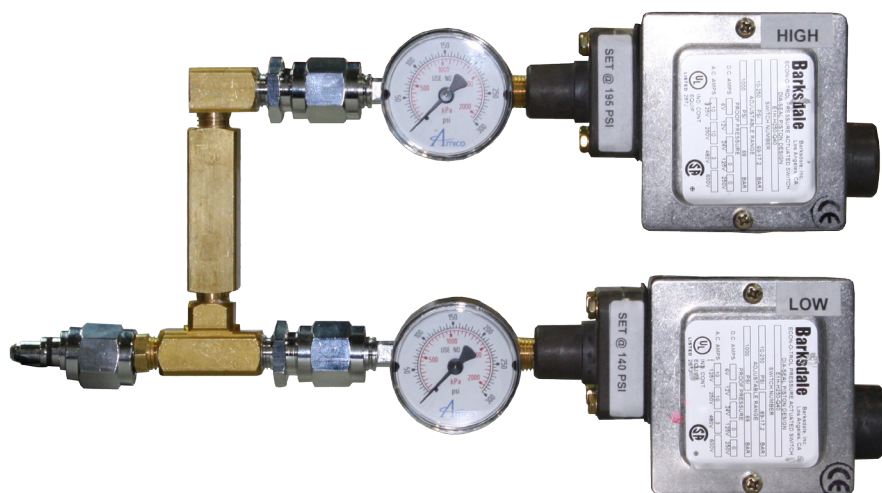
P-PRSW-GA-ORES = Pressure Switch with gauge assembly and OXY DISS kit

P-PRSW-GA-NORES = Pressure Switch with gauge assembly and N2O DISS kit

P-PRSW-GA-CRES = Pressure Switch with gauge assembly and CO2 DISS kit

Pressure Switch With Gauge

For Nitrogen / High and Low



Features:

- Nitrogen / AIR/CO₂/N₂O/OXY reserve systems
- Nitrogen / air and oxygen reserve systems
- Instrument quality snap-action switch
- Normally open or normally closed contacts
- Nema 4 water-tight housing
- 10-250 psi (adjustable range)
- Factory cleaned and sealed for oxygen service

General Specifications:

Pressure switch with gauge assembly for the medical gas alarm system shall incorporate a U.L. Listed single pole doublethrow snap-action switching element. Electrical connections are made through a 1/2" conduit connection to screw terminals on the switch. The switch may be wired normally open or normally closed. Electrical rating shall be 10 Ampere 120 volt AC.

The pressure switch has a proof pressure of 1000 psi with an adjustable range of 10 to 230 psi decreasing pressure or 11 to 250 psi increasing pressure. Only for nitrogen provide one switch for the high pressure alarm and one for the low pressure alarm signal.

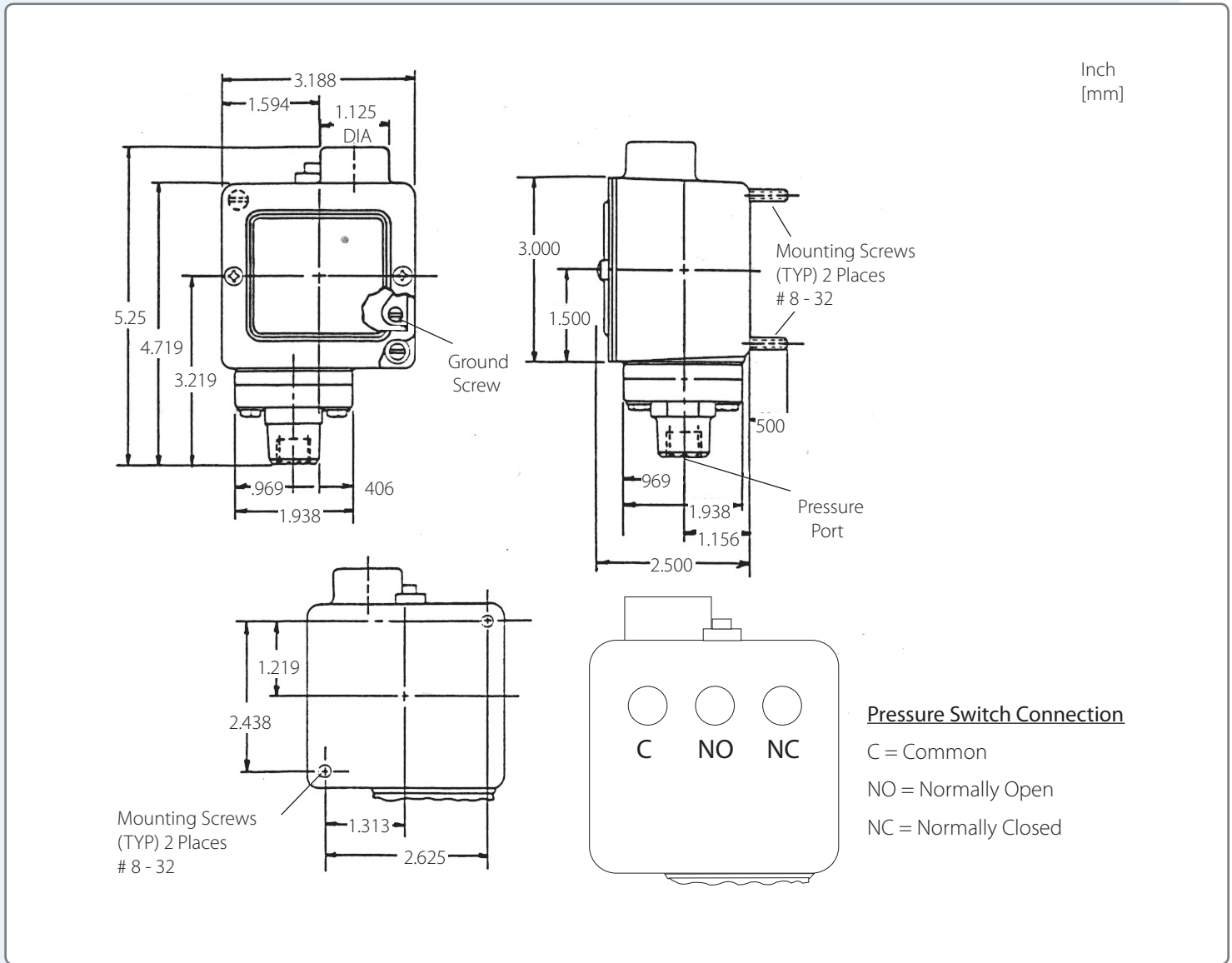
The enclosure is a Nema 4 water tight housing with a 1/4" NPT gas service line connection and a 1/2" NPT conduit hub .

A gauge is incorporated with a gas specific DISS nut and nipple that is attached to a 1/8" tee that houses the gauge.

The Pressure Gauge Assembly will then be mounted directly to a gas specific DISS demand check (provided by Amico) directly onto the pipeline. The demand check shall have a 1/4" Male NPT connection.

The Pressure Switch is UL Listed and CSA Approved.

Technical Specifications



Model Numbers

P-DPRSW-GAHL-NIT