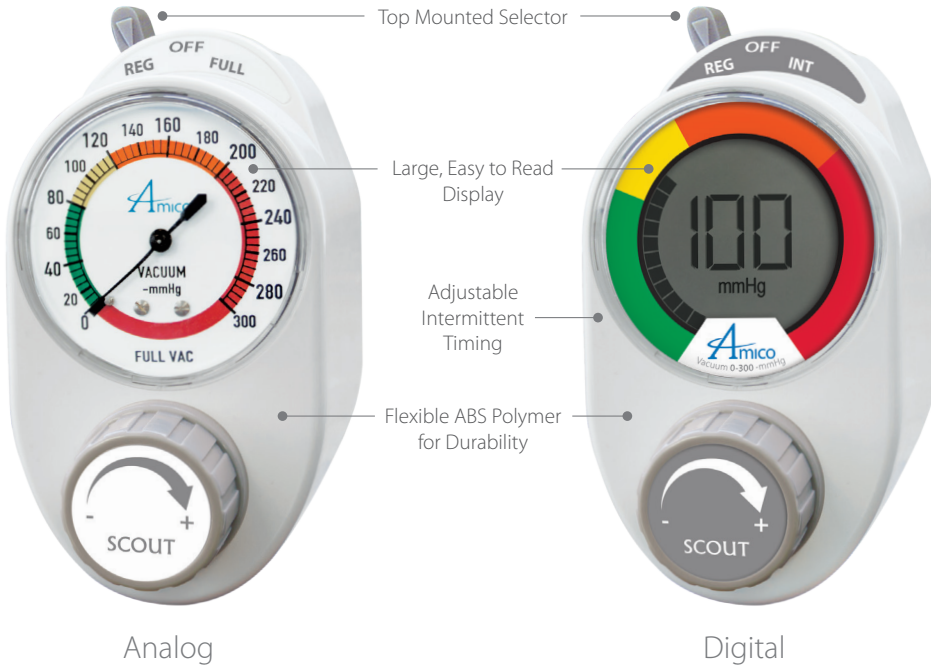


Vacuum Regulator

12 YEAR warranty



Analog

Digital

Features:

- Smallest and lightest unit on the market: 10 oz (290 g)
- ABS polymer casing – impact resistant and durable
- User-adjustable Timing can be accessed from the back of the unit
- Easy to read, color-coded gauges
- 10 Year warranty (Analog)
- 12 Year warranty (Digital)
- Only unit on the market with a disposable, see-through back body
- Designed with Infection Control features
- Ability to reverse flush
- Disposable component for easy cleaning

Color Coding Options



➔ Ease of Inventory Management

- By Department:
 - ED
 - Pediatrics
 - ICU

➔ Ease of Model Identification

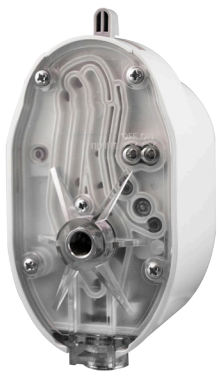
- By Model:
 - Surgical/Continuous High
 - Pediatrics
 - Continuous/Intermittent
 - Neonatal

Identify Contamination Instantly

Did You Know?

PATENT PENDING

NEW Clear Back Plate



New Infection Control Measure

Remove from the outlet and identify contamination immediately

In a study conducted in July 2010, entitled **Suction Regulators: A Potential Vector for Hospital-Acquired Pathogens**, the following results were determined:

- **37% of regulators** found in a hospital are **contaminated**
- These contaminants include “growth of well-established nosocomial pathogens” **known to cause Hospital Acquired Infections (HAI)**
- Contaminants **spread from a regulator to the wall-side canister and back to a simulated patient stomach within 24 hours**
- There is no mandatory check or preventative maintenance schedule outlined to determine if contamination is present

Amico's replaceable back body allows users to **safely dispose of the contaminated portion** of the regulator and **replace it with new**, sterile components for a fraction of the cost.

Suction Regulators: A Potential Vector for Hospital Acquired Pathogens by Keith S. Kaye, MD, MPH; Dror Marchaim, MD; Chester Smialowicz, MD; Lauren Bentley, MSBME

With **Amico's Clear Back Plate** and disposable body, you can spot contamination and have a new regulator in 3 simple steps:

Contaminated?

Disposable Body

Step 1:

Step 2:

Step 3: Reassemble with only 1 NEW Component

Continuous Models - White Labels

Continuous 3 Mode



SRA-C3U2-F2

Continuous 2 Mode



SRA-C2U2-F2

Pediatric 2 Mode



SRA-P2U2-F2

Neonatal 2 Mode



SRA-N2U2-F2

Continuous High/Surgical



SRA-CHU2-F2

Amico's continuous regulators provide unique features to ensure correct suctioning procedures and help improve clinical practice.

- Adult models regulate to 300 mmHg and at full suction provide maximum pressure from wall outlets.
- Continuous High/Surgical models regulate to 750 mmHg and are uniquely designed for surgical procedures. They provide high flow rates for an OR environment.
- Pediatric and Neonatal continuous models regulate to 160 mmHg and 100 mmHg with positive pressure relief valves for safety.
- All units can be upgraded to Intermittent suctioning as well as Digital displays.

Continuous/Intermittent Models - Grey Labels

Adult Continuous/Intermittent



SRA-CIU2-F2

Pediatric Continuous/Intermittent



SRA-PIU2-F2

Neonatal Continuous/Intermittent



SRA-NIU2-F2

Amico's continuous/intermittent models are ideal for any critical care environment but can also be used in all patient areas since they are considered combination units. Our unique intermittent module provides a reliable and quiet means of cycling the suction levels on and off during intermittent mode.

- Adult models regulate to 300 mmHg, Pediatric models to 160 mmHg and Neonatal models to 100 mmHg.
- Pediatric and Neonatal models have positive pressure relief valves for safety.
- ON/OFF Timing cycles operate independently and can be adjusted on the back plate of the unit without removing any casing.
- All units can be upgraded to Digital displays.

Vacuum Regulator with Roll Stand



Features:

- Overall height 30" (76.2 cm)
- 2" (5.08 cm) swivel casters
- White plastic body
- 4 mounting locations for suction canister placement
- Regulator mount (VAC DISS Handtight)

part#: S-RS-30-UDH*

*Canisters, holders and suction regulator not included

Accessories:



Vacuum/Safety Traps



Disposable Canister and Holder



Autoclavable Canisters and Holders

Easy to Upgrade:

Analog to Digital



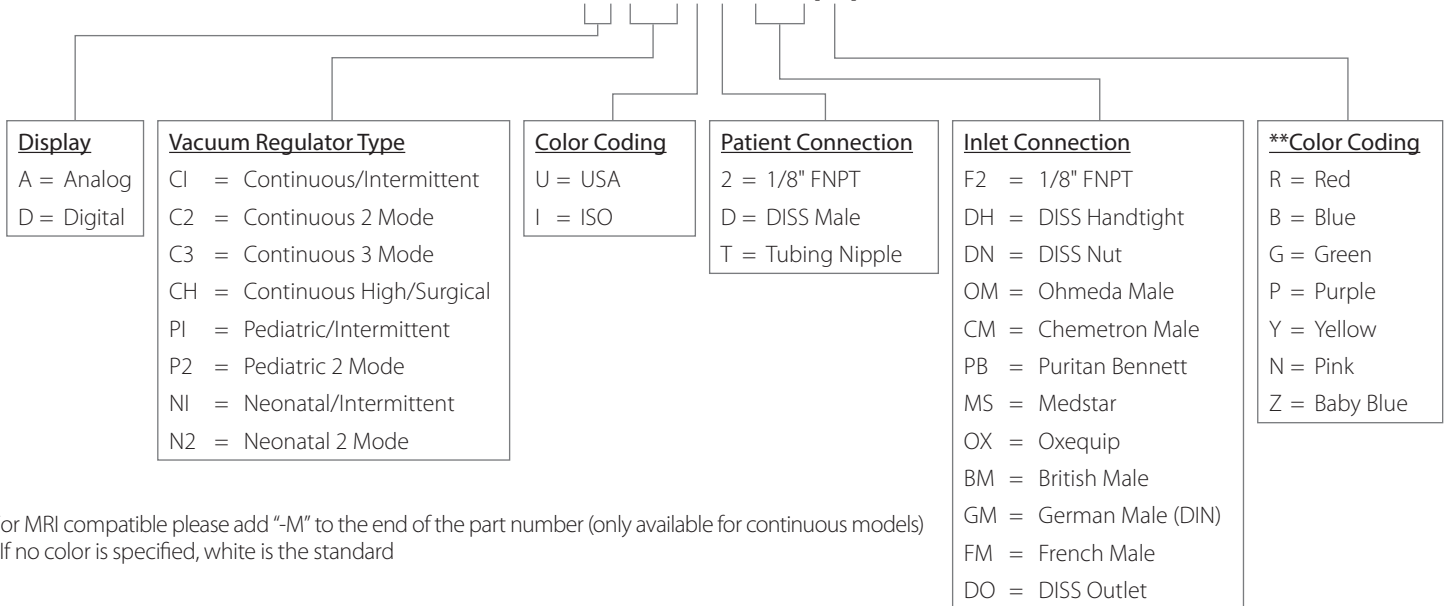
Technical Specifications



Performance			
Flowrate	Intermittent:	Adult: 8 LPM	Pediatric: 8 LPM Neonatal: 8 LPM
	Continuous:	Adult: 65 LPM	Pediatric: 40 LPM Neonatal: 40 LPM
Timing	<ul style="list-style-type: none"> • 16 seconds on/8 seconds off • Timing can be adjusted on the back of the unit with access to ON and OFF needle valves • Starts in the OFF position 		
		Gauge Accuracy	
	Vacuum Range	Analog	Digital
Neonatal	0-100 mmHg (13 kPa)	± 3% Full-scale	± 1% Full-scale
Pediatric	0-160 mmHg (20 kPa)	± 3% Full-scale	± 1% Full-scale
Adult	0-300 mmHg (40 kPa)	± 3% Full-scale	± 1% Full-scale
Surgical	0-750 mmHg (94 kPa)	± 3% Full-scale	± 1% Full-scale
Physical			
Dimensions	5.94" H x 2.93" W x 4.04" D (15.09 cm x 7.44 cm x 10.26 cm)		
Weight	Continuous: 10 oz (290 g), Intermittent: 13 oz (360 g)		
Battery			
Lithium	Two 2/3 AA batteries, 3.6 V, 1.6 Ah, lithium		

Model Number

SRX-XXXX-XX(X)-C*



* For MRI compatible please add "-M" to the end of the part number (only available for continuous models)

** If no color is specified, white is the standard



Amico Patient Care Corporation 122 East Beaver Creek Road, Richmond Hill, ON L4B 1G6, Canada
 Toll Free Tel: 1.877.462.6426 | Toll Free Fax: 1.866.440.4986 | Tel: 905.764.0800 | Fax: 905.764.0862

www.amico.com

